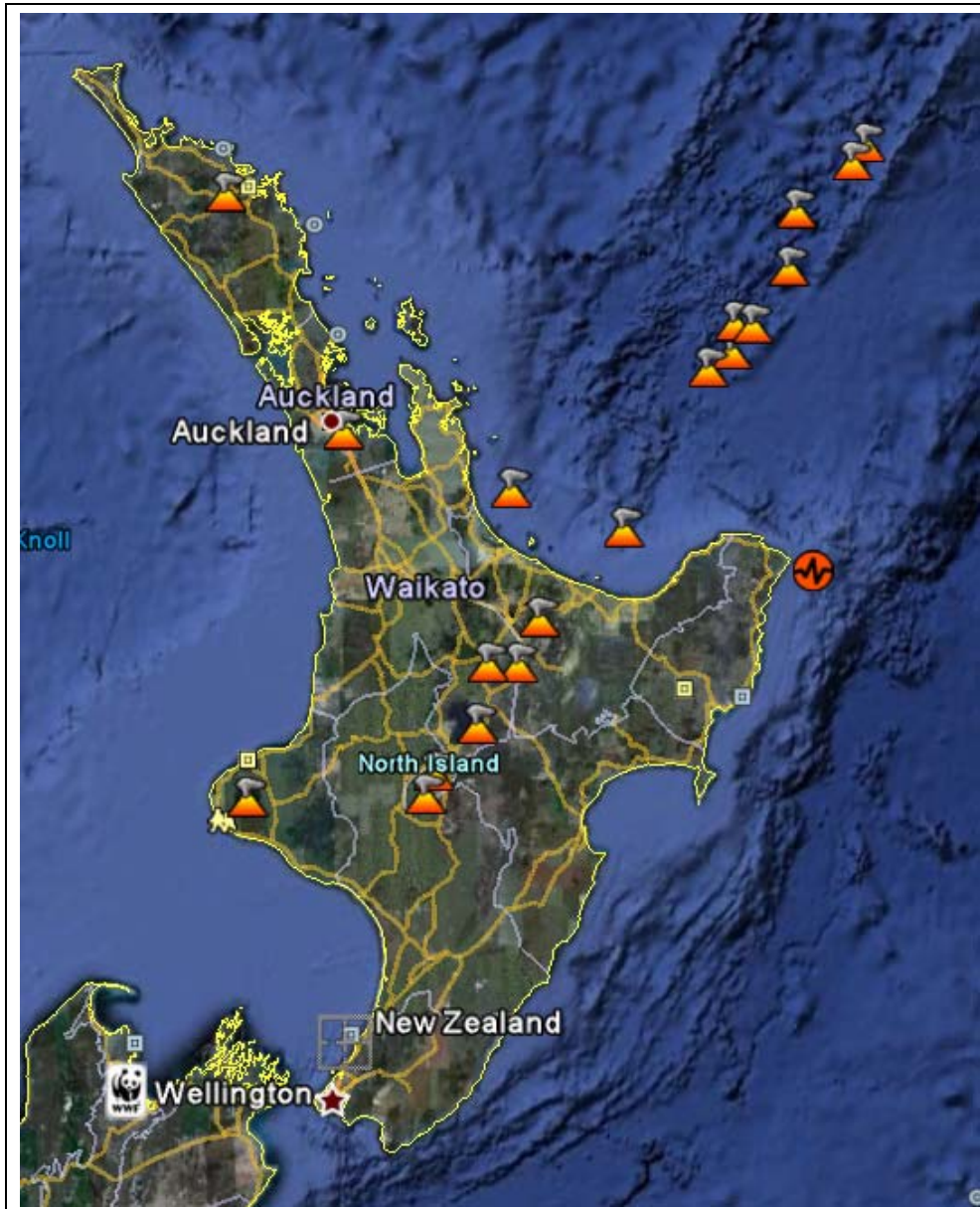


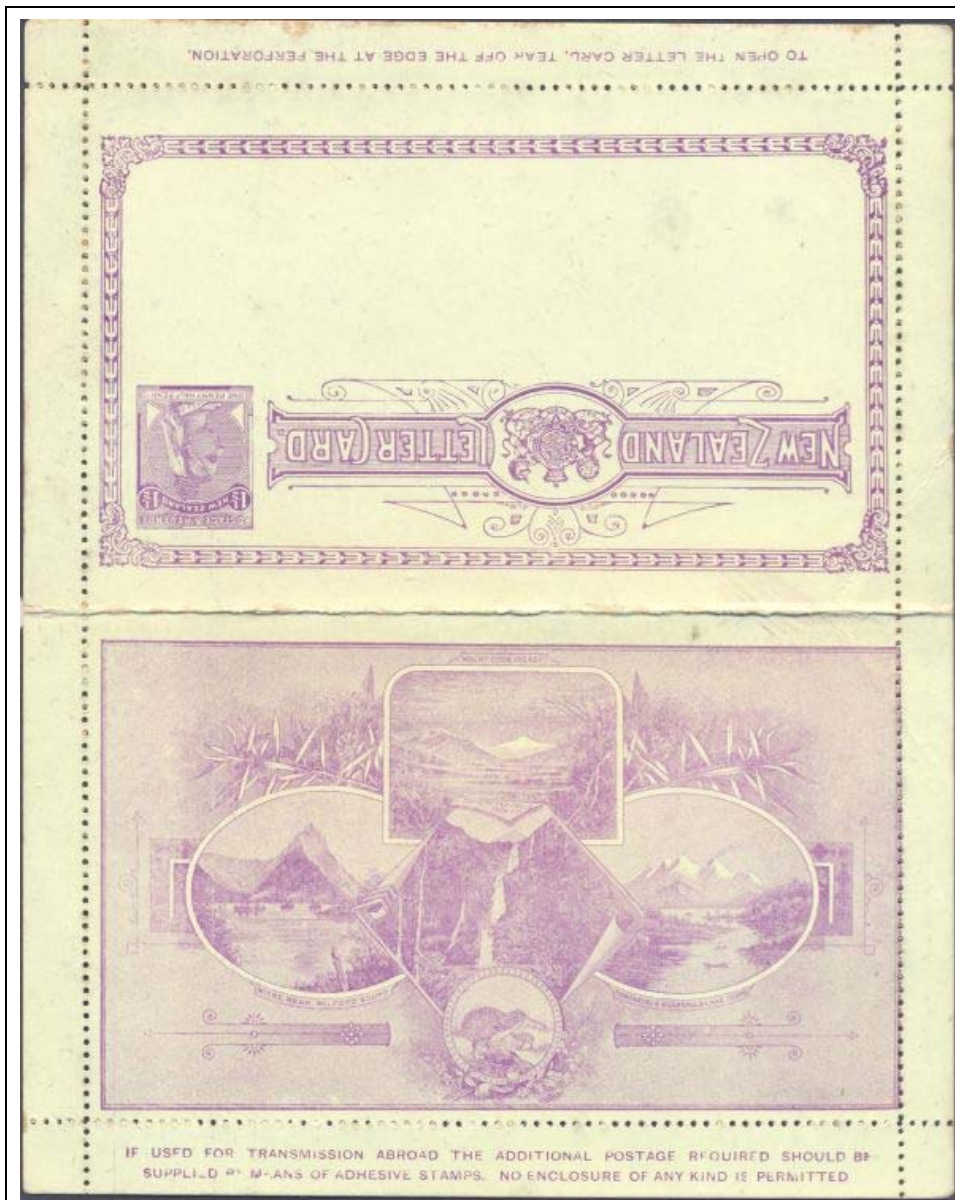
New Zealand - volcanism



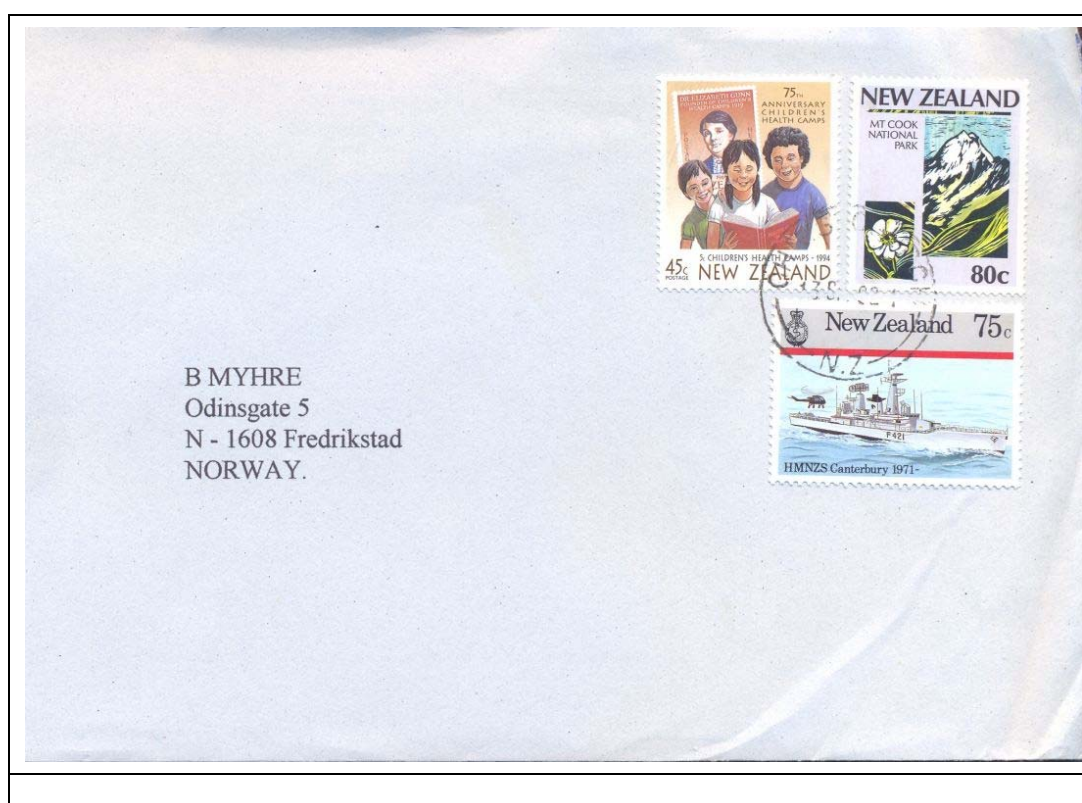
New Zealand has more than 70 volcanoes, active and dormant.

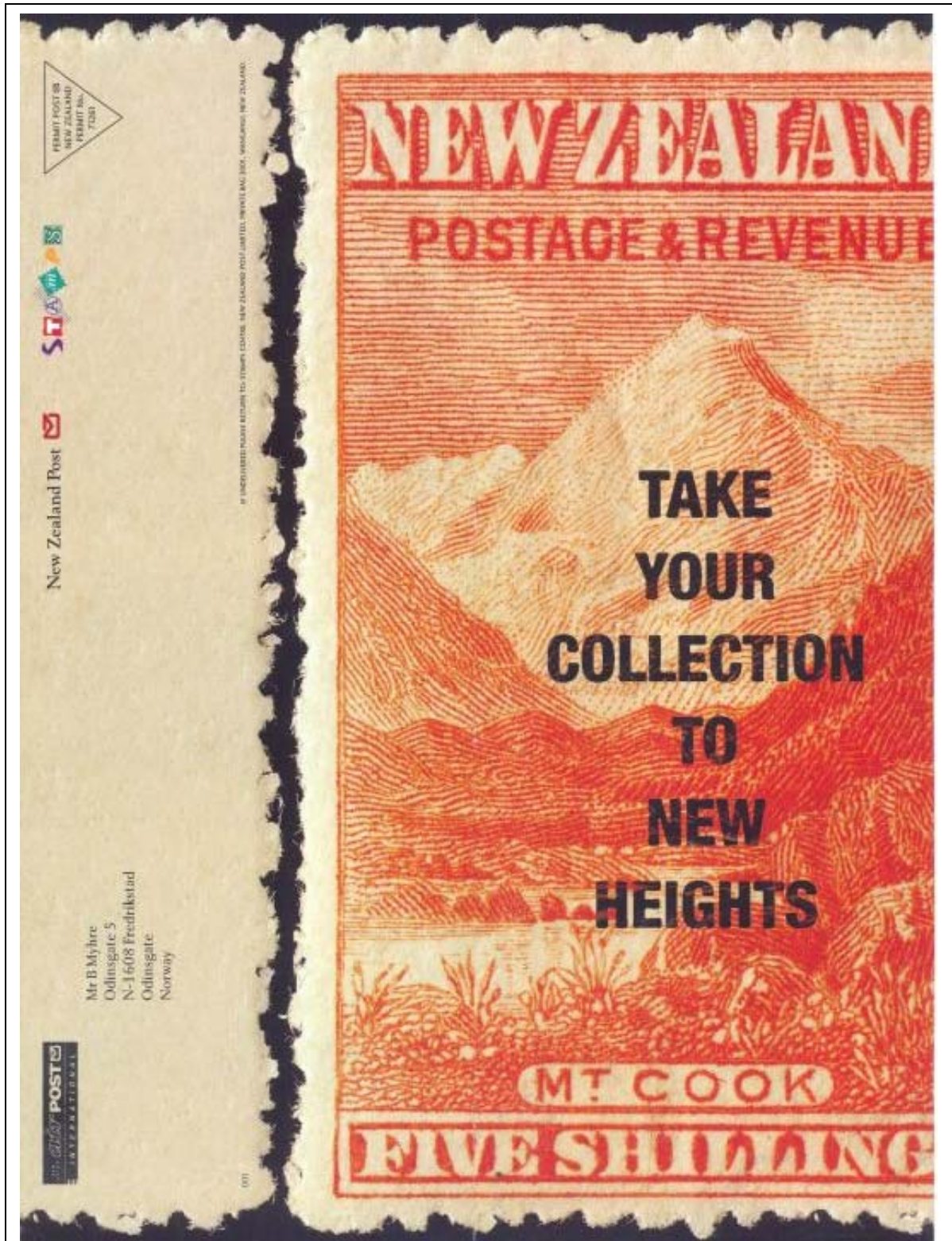
Mount Cook volcano



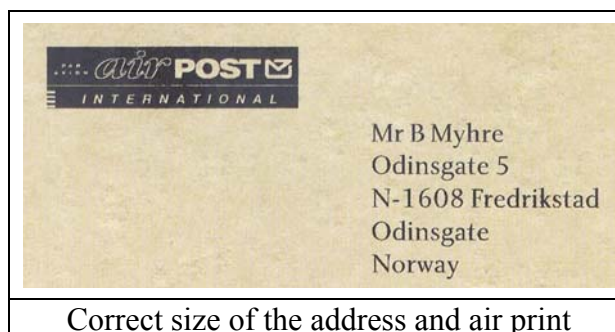


Lettercard from the 1980ies with Mt. Cook on the upper picture





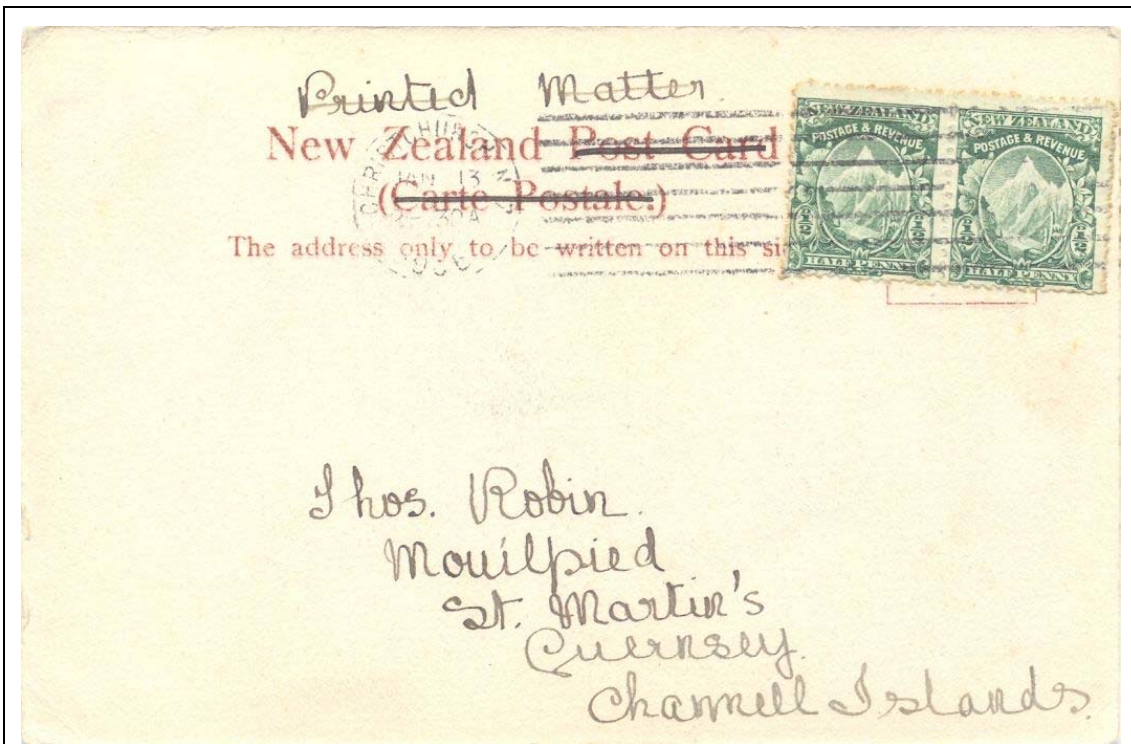
1999 - Mt. Cook on Postal stationery, strongly reduced size



Correct size of the address and air print



Postal stationery card with Mt. Cook in upper, left corner

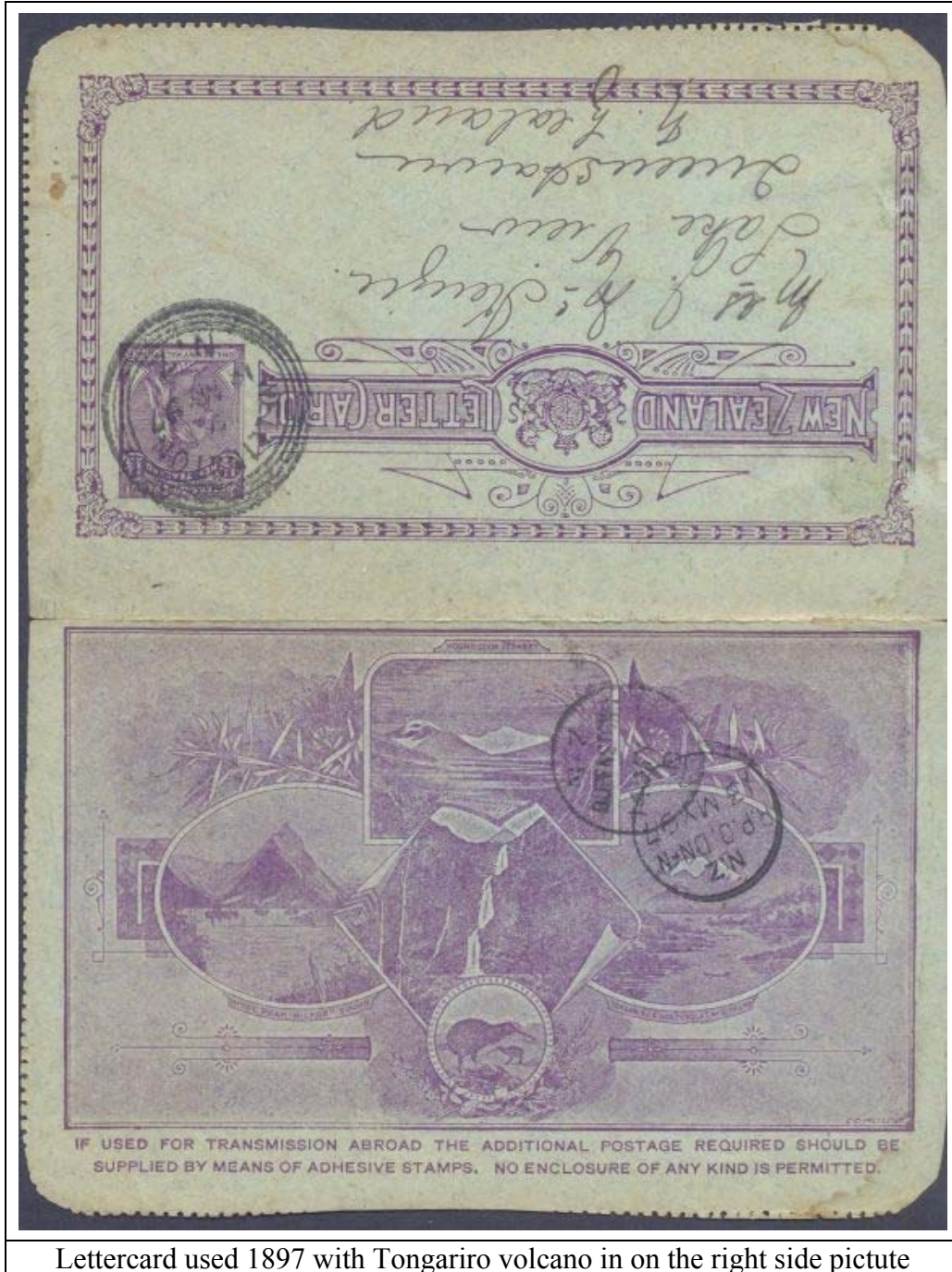


Pair of ½ d Mt. Cook on postcard to Guernsey 1905

Mt. Egmont (Taranaki) volcano



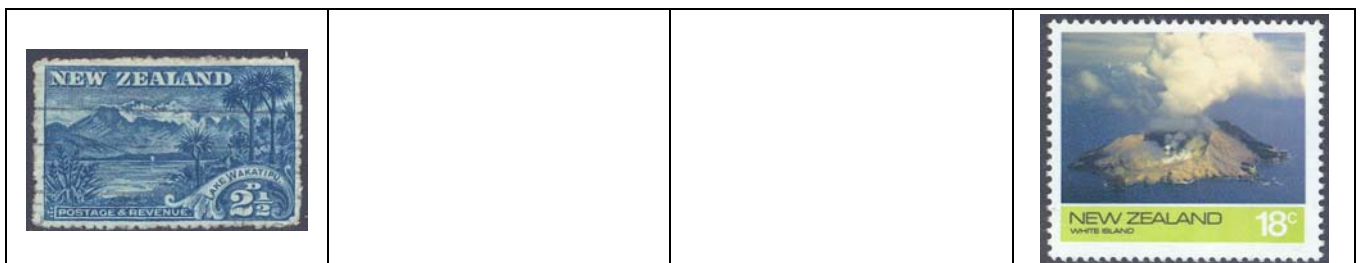
Tongariro volcano



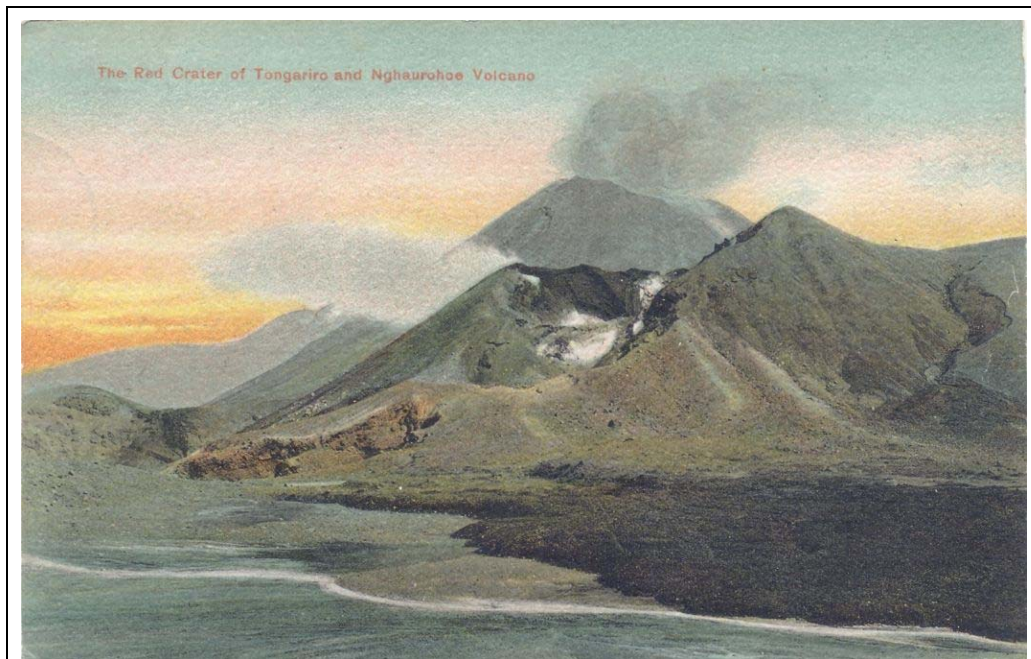
Lettercard used 1897 with Tongariro volcano in on the right side picture

Wakatipu volcano

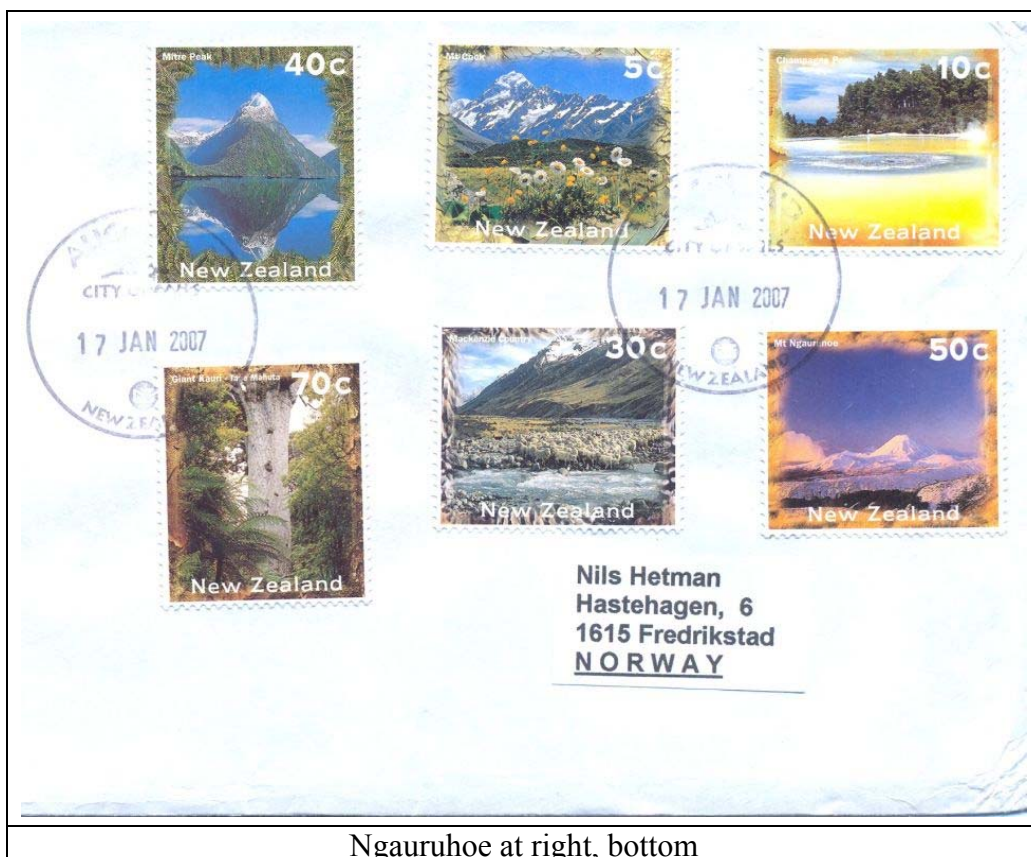
White Sand



Mt. Nghauruhoe volcano



In front we see the Ngauruhoe. Behind is Tongariro erupting, as it did 1904, 05, 06, 07, 09 and 10.. Postcard sent to Austria 1910.



Ngauruhoe at right, bottom

Mt. Ruapehu



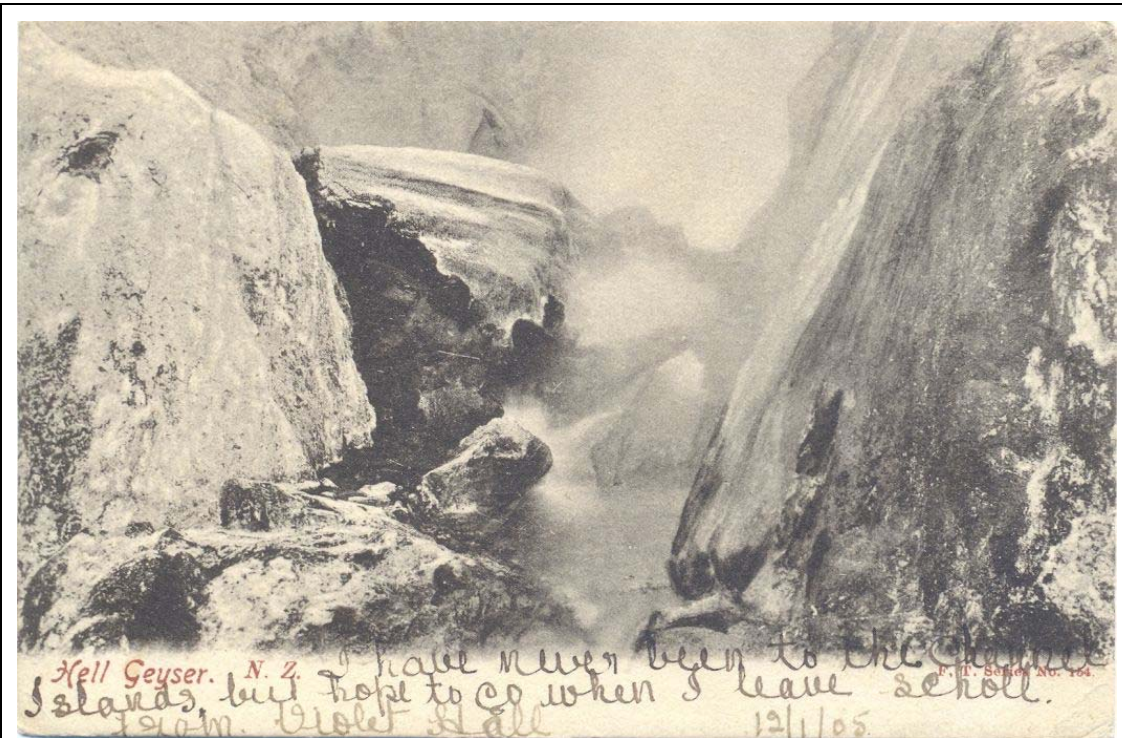
Pohute geyser



Waikite geyser



Postal stationary card from the 1890ies showing Waikite Geyser in the bottom, left



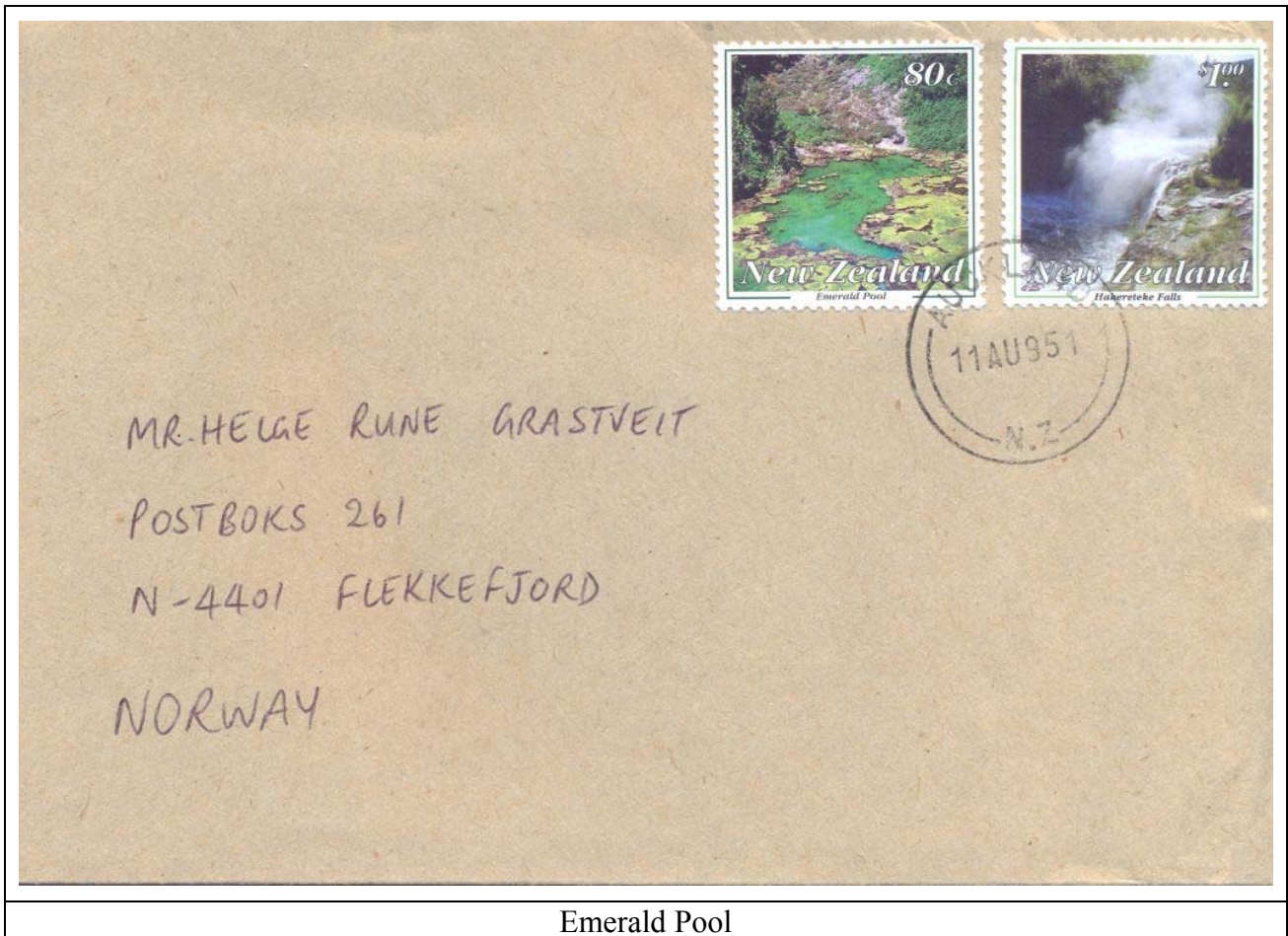
Hell geyser

Mud pot

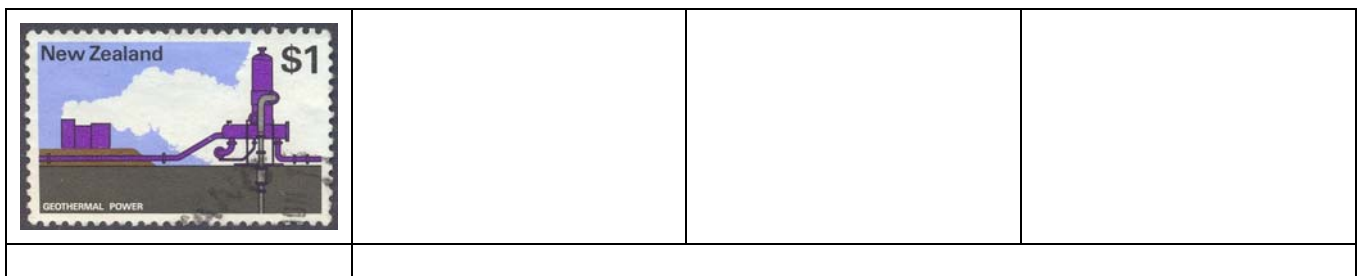
Warbrick terrace



Emerald Pool

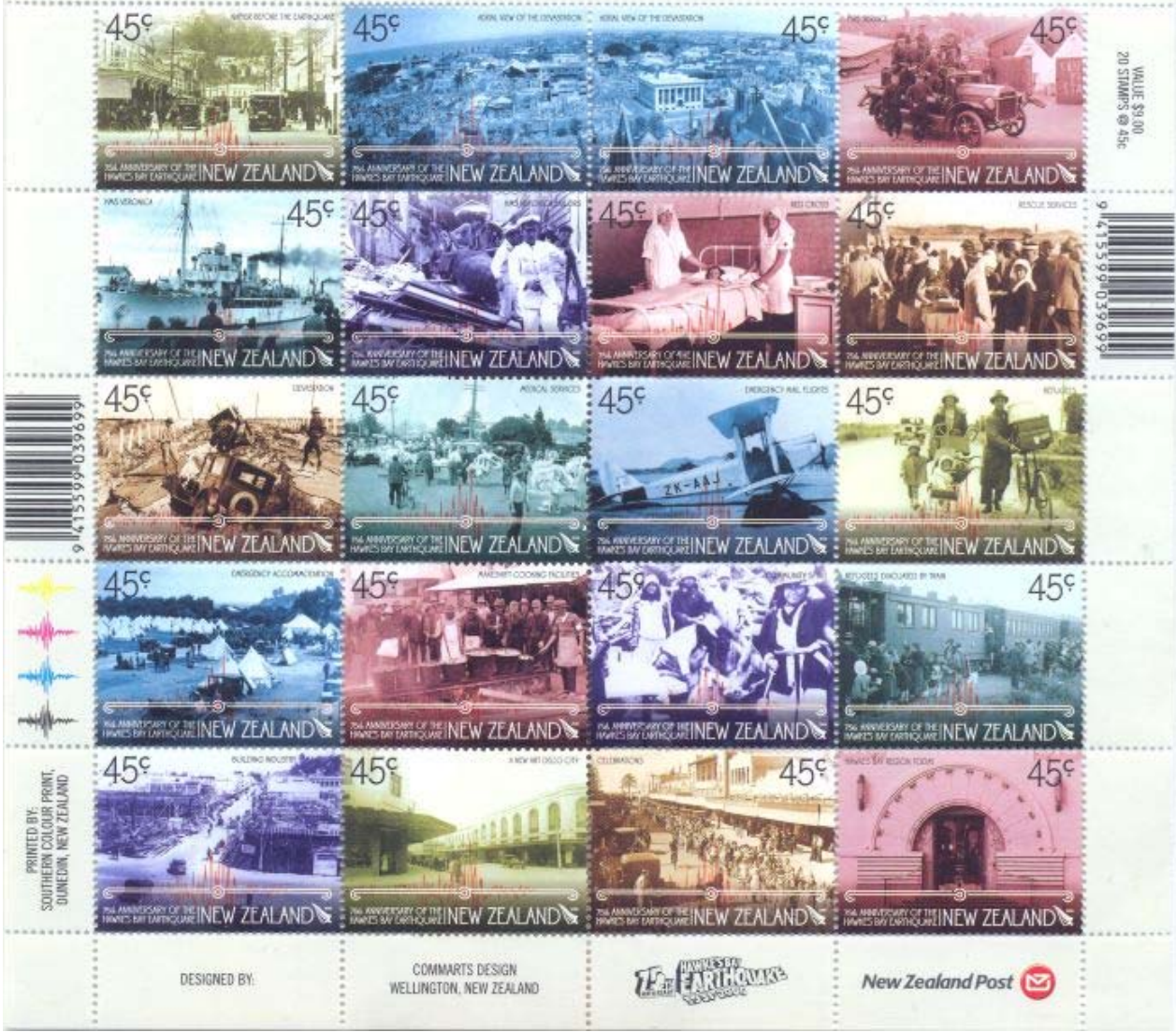


Thermal energy used by man



Earthquakes

75th ANNIVERSARY OF THE
HAWKE'S BAY EARTHQUAKE | 1931-2006



The Hawke's Bay earthquake 1931 measured 7,8 on the Riechter's scale and killed more than 250 people.